

Clarke®

air



HAND HELD SODA BLASTER

MODEL NO: CHHSB1

PART NO: 7640137

OPERATING & MAINTENANCE INSTRUCTIONS

UK
CA | CE

ORIGINAL INSTRUCTIONS

GC 06/23

INTRODUCTION

Thank you for purchasing this CLARKE product. Before attempting to use this product, please read this manual thoroughly and follow the instructions carefully. In doing so you will ensure the safety of yourself and that of others around you, and you can look forward to your purchase giving you long and satisfactory service.

GENERAL USER SAFETY



CAUTION: FAILURE TO FOLLOW THESE PRECAUTIONS COULD RESULT IN PERSONAL INJURY, AND/OR DAMAGE TO PROPERTY.

WORK ENVIRONMENT

1. Keep the work area clean and tidy.
2. Keep children and visitors away - DO NOT let children handle the tool.
3. **DO NOT** operate where there are flammable liquids or gases.
4. **ALWAYS** make sure there is adequate ventilation. DO NOT blast in confined or enclosed areas.
5. Media used in this soda blaster may be covered by COSHH Regulations.

PERSONAL SAFETY

1. Stay alert and use common sense. DO NOT operate the air tool when you are tired or under the influence of alcohol, drugs or medication.
2. **ALWAYS** wear eye protection when using the soda blaster- This must provide protection from flying particles from the front and the side. NOTE: Spectacles **DO NOT** give sufficient protection, correct goggles must be worn, although a full face mask is strongly recommended.
3. **ALWAYS** wear a dust mask when operating this type of device. Dust masks **MUST ALWAYS BE WORN**. Inhaling dust produced by the blasting process or the possible inhalation or ingestion of soda is extremely hazardous.
4. **DO NOT** overreach - Keep proper footing and balance at all times.

USE OF COMPRESSED AIR POWERED TOOLS

1. **NEVER** use oxygen, CO₂, combustible gases or any type of bottled gas as a source of power for the tool.

2. **DO NOT** connect the air supply hose with your finger on the trigger.
3. **DO NOT** exceed the maximum pressure for the product.
4. Check hoses for leaks or worn condition before use and ensure that all connections are secure.
5. Keep the air supply hose away from heat, oil and sharp edges.
6. **DO NOT** fit the soda blaster to any clamping device that may damage it.
7. **ALWAYS** disconnect from the air supply when not in use or performing any maintenance.
8. **ALWAYS** keep the blaster clean for the best and safest performance.
9. **ALWAYS** use appropriate air hoses and couplings and ensure that they are in good condition. If any parts are worn or damaged, they should be replaced immediately.
10. Quick change couplings should not be located at the air tool. They add weight and could fail due to vibration.
11. Use clamps or vices to hold a loose workpiece. Failure to secure the workpiece could result in personal injury.
12. **NEVER** direct the soda blaster at people or animals. In the case of injury, seek expert medical advice immediately.
13. **ALWAYS** hold the soda blaster firmly and maintain good balance.
14. **ALWAYS** ensure hose couplings are secure before use.
15. **NEVER** use wet or even damp blast media. Ensure the soda is completely dry,
16. **NEVER** operate the blaster in the vicinity of an air compressor unless an efficient air filter is fitted. The possibility of blasting media entering the air compressor cylinder, which would cause serious damage, should not be overlooked.
17. **NEVER** allow children to use or play with this device.

TRANSPORTATION AND STORAGE

1. **NEVER** carry the soda blaster by the air supply hose.
2. **ALWAYS** turn OFF the air supply at the compressor outlet and expel all air from the air hose and gun, BEFORE disconnecting the soda blaster from the air hose.
3. **NEVER** carry the soda blaster with your finger on the trigger.
4. When not in use the soda blaster should be disconnected from the air supply and stored in a dry place out of the reach of children.

COMPRESSED AIR REQUIREMENTS



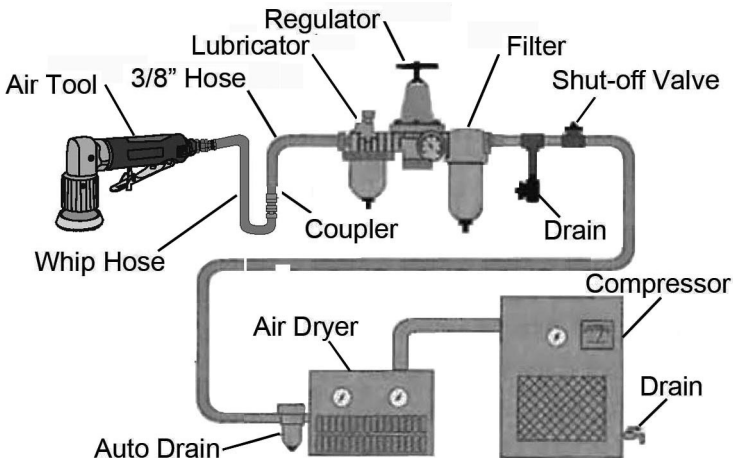
WARNING: COMPRESSED AIR CAN BE DANGEROUS. ENSURE THAT YOU ARE FAMILIAR WITH ALL PRECAUTIONS RELATING TO THE USE OF AIR COMPRESSORS AND COMPRESSED AIR SUPPLIES.

Use only clean, dry, regulated compressed air as a power source.

Air compressors used must comply with the appropriate European Community Safety Directives.

A build-up of moisture or oil in the air compressor will accelerate wear and corrosion in the tool. Ensure any moisture is drained from the compressor daily and the airline filter is kept clean.

If an unusually long air hose is required, (over 8 metres), the line pressure or the hose inside diameter may need to be increased. The air hose must be rated at least 150% of the maximum operating pressure of the tool.



A typical air line layout is shown above. If an automatic in-line filter/regulator is used, it will keep air tools in good condition.

Never exceed the maximum operating pressure for the tool stated on page 6. Higher pressures and contaminated air will shorten the life of the tool due to faster wear and is a possible safety hazard.

A wide range of airline accessories is available including filter/regulators, high-pressure hoses (5 to 50 metres) etc. Contact your CLARKE dealer for further information or CLARKE International Service Department.

BEFORE USE

1. Connect a suitable hose with a threaded connector to the air inlet.
2. Connect the other end of the hose to the compressor.
3. Run the compressor at low pressure and check for leaks.
4. Fill the container with dry soda blasting media. Wet or moist soda can clog the blaster and cause a malfunction. Maximum 3/4 filled.
5. Adjust the compressor pressure to the required value.

NOTE: ALWAYS consult the soda manufacturer's recommendations for the correct grade of media to be used and NEVER use damp soda.

OPERATION

1. Ensure the breather hole in the container cap is clear.
2. Place the nozzle against a scrap piece of material and pull the trigger to discharge excessive soda in the feed tube. You could cause damage to the workpiece if you do not carry out this procedure.
3. Improve the overall performance by adjusting the air pressure, the distance from the work and the amount of soda.
4. Hold the blaster the appropriate distance from the workpiece to be cleaned and where possible, perpendicular to the workpiece. Squeeze the trigger for a few seconds at a time. Check the workpiece frequently.

NOTE: The softer the material the lower the pressure or the further the nozzle should be held from the workpiece.

5. Shake the gun frequently when in use to prevent a cavity forming in the container, thereby ensuring that the soda will be drawn up correctly.
6. Press the trigger all the way down and find the right flow of soda by adjusting the nozzle. To find the default setting screw on the nozzle until it stops with the locking ring fully mounted, default setting is 2.5 turns 12.5-3mm up from here. The amount of soda should be neither too low nor too high. Test it by directing the blast onto some less visible part of the workpiece. Once you have got the right flow of soda, lock the nozzle by turning the locking ring.
 - The finish left by the blast operation should be ideal for immediate priming where required.

7. When finished clean off soda dust e.g. with a blowgun or by vacuum cleaning. If your workpiece is to be painted after the blasting it is a good idea to clean it thoroughly before painting.
8. DO NOT disconnect the air supply hose until the compressor has been shut down and the compressed air released. Refer to the compressor instruction manual for the procedure to shut down and release the compressed air.

MAINTENANCE

This soda blaster requires minimum maintenance and no adjustment is possible. After use, remove the container and wipe all surfaces clean and dry ensuring that there are no traces of waste material. Store in a dry environment.

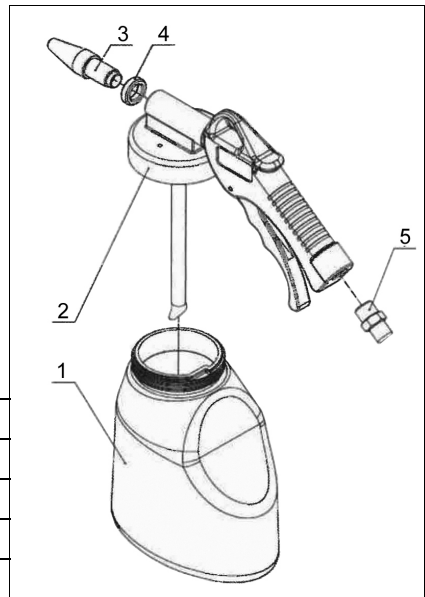
Before next use, drain any water from the air line and compressor.

PERFORMANCE

Please note that factors other than the tool may effect its operation and efficiency such as reduced compressor output, excessive drain on the airline moisture or restrictions in the air-line, or the use of connectors of improper size or poor condition which will reduce air supply.

COMPONENT PARTS




1. Soda media container
2. Soda Blasting Gun assembly
3. Nozzle
4. Locking Ring
5. Air inlet connector



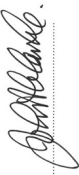


Use Soda blast abrasive (coarse) Part No 3052805 (7.5kg)

Dimns (L x W x H)	245 x 85 x 200 mm
Weight	0.52 kg
Air Inlet Size	3/8" BSP (female)
Operating Pressure	75-115 psi
Air Consumption	8 cfm @90psi

DECLARATIONS OF CONFORMITY

	 <p>Clarke[®] INTERNATIONAL Fitzwilliam Hall, Fitzwilliam Place, Dublin 2</p>
DECLARATION OF CONFORMITY	
This is an important document and should be retained.	
<p>We hereby declare that this product(s) complies with the following legislation:</p>	
<p>2006/42/EU <i>Machinery Directive</i></p>	<p>The following standards have been applied to the product(s): EN 12100:2010, EN 60204-1:2018, EN 1248:2001+A1:2008</p>
<p>The technical documentation required to demonstrate that the product(s) meet(s) the requirement(s) of the aforementioned legislation has been compiled and is available for inspection by the relevant enforcement authorities.</p>	
<p>The CE mark was first applied in: 2023</p>	
<p>Product Description: Model Number(s): Serial/Batch Number: Date of Issue:</p>	<p>Hand Held Soda Blaster CHHSB1 Refer to product/packaging label 21/04/2023</p>
<p>Signed:</p>	 J.A. Clarke Director
<p>CHHSB1 CE Clarke DOC 042123</p>	

	 <p>Clarke[®] INTERNATIONAL Hemnal Street, Epping, Essex, CM16 4LG</p>
DECLARATION OF CONFORMITY	
This is an important document and should be retained.	
<p>We hereby declare that this product(s) complies with the following legislation:</p>	
<p><i>The Supply of Machinery (Safety) Regulations 2008</i></p>	<p>The following standards have been applied to the product(s): EN 12100:2010, EN 60204-1:2018, EN 1248:2001+A1:2008</p>
<p>The technical documentation required to demonstrate that the product(s) meet(s) the requirement(s) of the aforementioned legislation has been compiled and is available for inspection by the relevant enforcement authorities.</p>	
<p>The UKCA mark was first applied in: 2023</p>	
<p>Product Description: Model Number(s): Serial/Batch Number: Date of Issue:</p>	<p>Hand Held Soda Blaster CHHSB1 Refer to product/packaging label 21/04/2023</p>
<p>Signed:</p>	 J.A. Clarke Director
<p>CHHSB1 UKCA Clarke DOC 042123</p>	

A SELECTION FROM THE VAST RANGE OF

Clarke®

QUALITY PRODUCTS



AIR COMPRESSORS

From DIY to industrial, Plus air tools, spray guns and accessories.

GENERATORS

Prime duty or emergency standby for business, home and leisure.

POWER WASHERS

Hot and cold, electric and engine driven - we have what you need

WELDERS

Mig, Arc, Tig and Spot. From DIY to auto/industrial.

METALWORKING

Drills, grinders and saws for DIY and professional use.

WOODWORKING

Saws, sanders, lathes, mortisers and dust extraction.

HYDRAULICS

Cranes, body repair kits, transmission jacks for all types of workshop use.

WATER PUMPS

Submersible, electric and engine driven for DIY, agriculture and industry.

POWER TOOLS

Angle grinders, cordless drill sets, saws and sanders.

STARTERS/CHARGERS

All sizes for car and commercial use.

Guarantee

This product is guaranteed against faulty manufacture for a period of 12 months from the date of purchase. Please keep your receipt which will be required as proof of purchase.

This guarantee is invalid if the product is found to have been abused or tampered with in any way, or not used for the purpose for which it was intended. Faulty goods should be returned to their place of purchase, no product can be returned without prior permission.

This guarantee does not affect you statutory rights.

PARTS & SERVICE: 020 8988 7400

E-mail: Parts@clarkeinternational.com or Service@clarkeinternational.com

SALES: UK 01992 565333 or Export 00 44 (0)1992 565335

Clarke INTERNATIONAL Hemnall Street, Epping, Essex CM16 4LG
www.clarkeinternational.com